

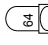







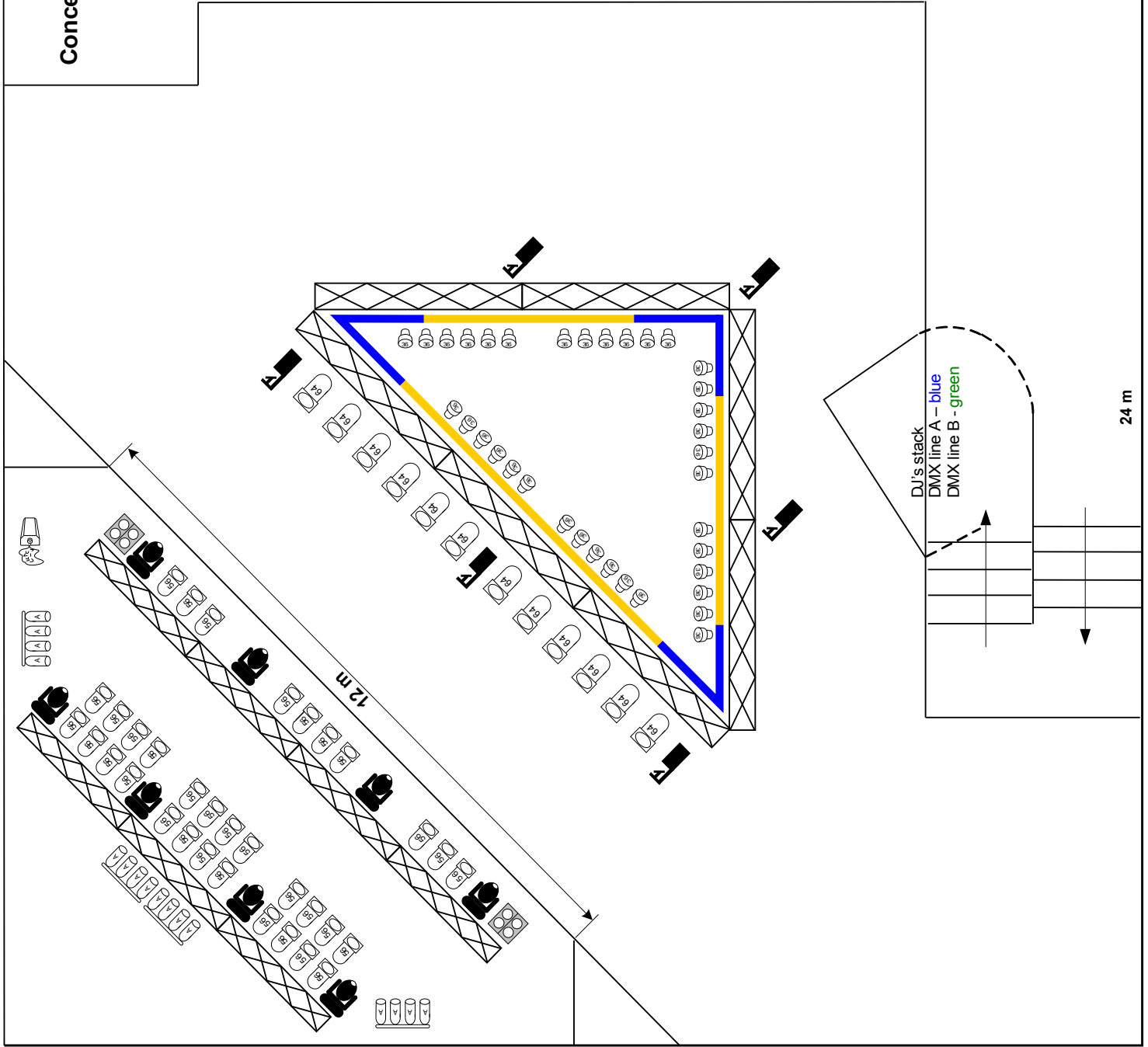




# KLUB STUDIO Concert Hall Light Overview

12 m

-  Elation Design Spot Pro 250
-  Moon 250
-  PAR 64
-  PAR 56
-  PAR 36
-  ACL (8x250W)
-  Blinder
-  HazeBase base cap
-  Neon Blue
-  Neon Red

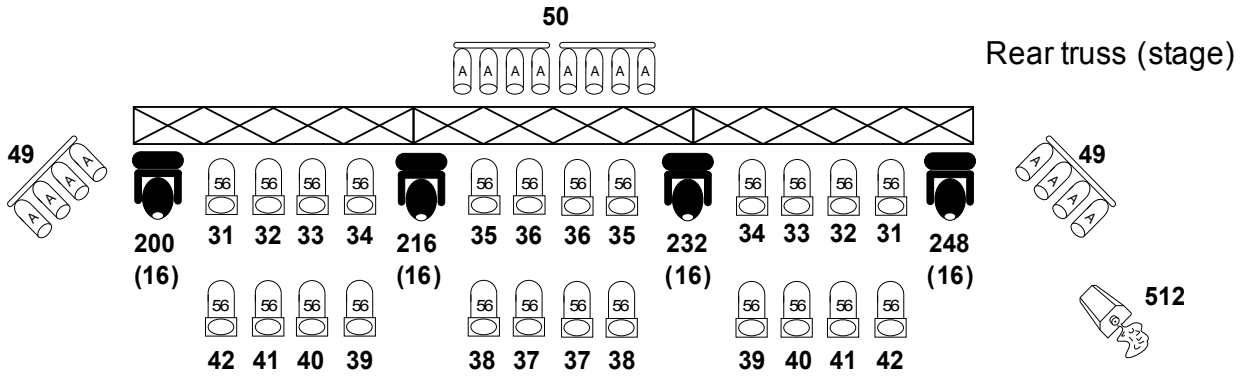


DJ's stack  
DMX line A - blue  
DMX line B - green

24 m

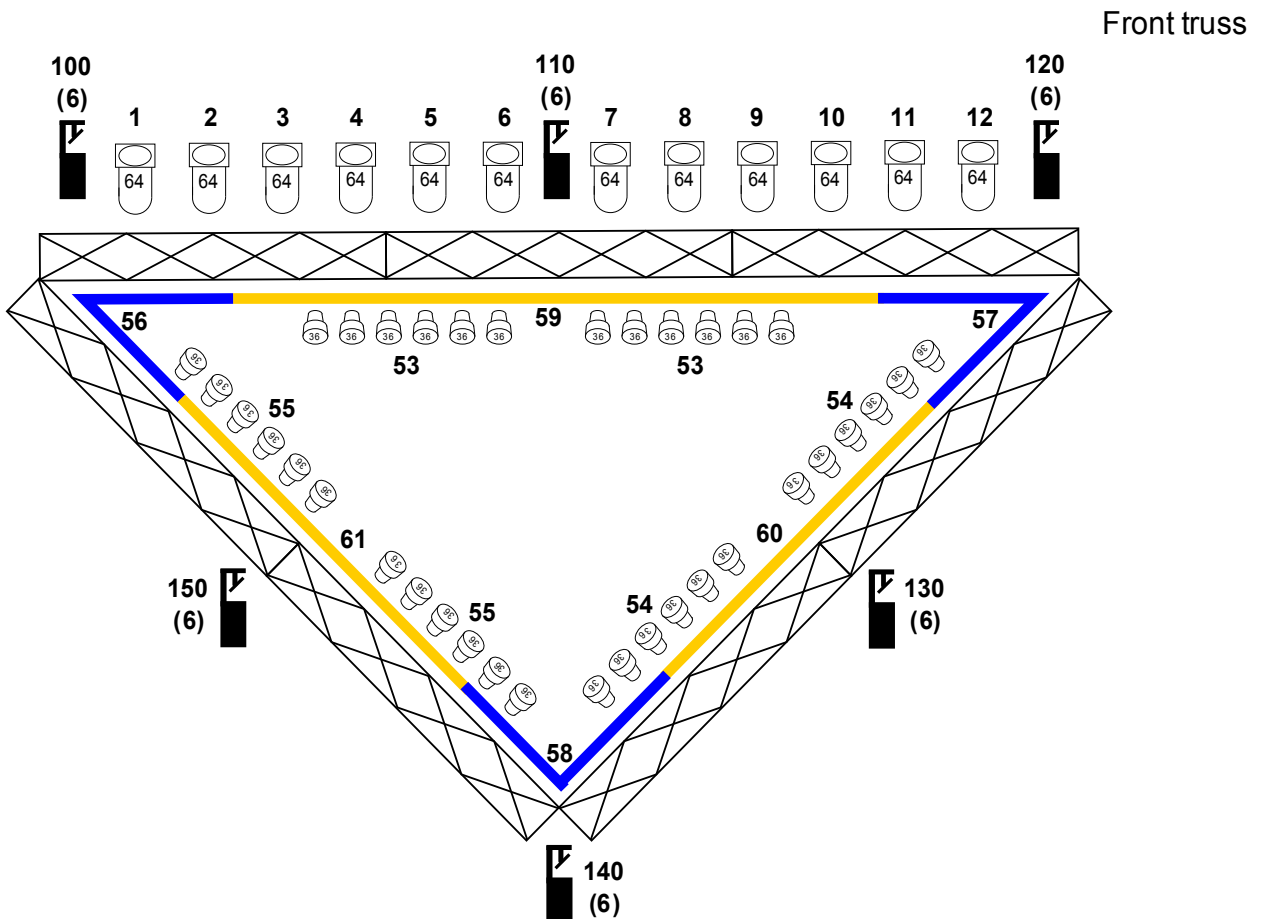
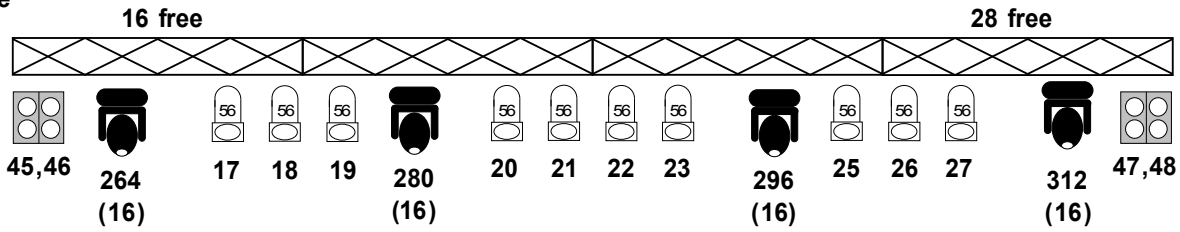
# KLUB STUDIO

## Light - DMX addresses



Stage left  
13-15 free

Stage right  
27-30 free



## KLUB STUDIO Light - list of DMX addresses

DMX addr.	Unit	Dimmer	DMX line	Location
1-12	PAR 64 (1000 W)	1200 W / channel	A	Front truss
13-15	free	600 W / channel	A	Stage left
16	free	600 W / channel	A	Middle truss (stage)
17-19	PAR 56 (300 W)	600 W / channel	A	Middle truss (stage)
20-23	PAR 56 (300 W)	600 W / channel	A	Middle truss (stage)
24-26	PAR 56 (300 W)	600 W / channel	A	Middle truss (stage)
16	free	600 W / channel	A	Middle truss (stage)
28-30	free	600 W / channel	A	Stage right
31-42	PAR 56 (300 W) x 2	600 W / channel	A	Rear truss (stage)
43,44	Not used	-	-	-
45,46	Blinder (2x2)	1200 W / channel	A	Middle truss (stage)
47,48	Blinder (2x2)	1200 W / channel	A	Middle truss (stage)
49	ACL (250 W x 8)	2200 W	A	Rear truss (stage)
50	ACL (250 W x 8)	2200 W	A	Rear truss (stage)
51	Additional ACL (250 W x 8)	2200 W	A	Rear truss (stage)
52	Not used	-	-	-
53	PAR 36 (12 x 38 W)	600 W	B	Front truss
54	PAR 36 (12 x 38 W)	600 W	B	Front truss
55	PAR 36 (12 x 38 W)	600 W	B	Front truss
56,57,58	Neon blue	600 W / channel	B	Front truss
59,60,61	Neon red	600 W / channel	B	Front truss
62,63,64	Not used	-	-	-
100-109	Moon 250 (Scan)	n/a	B	Front truss
110-119	Moon 250 (Scan)	n/a	B	Front truss
120-129	Moon 250 (Scan)	n/a	B	Front truss
130-139	Moon 250 (Scan)	n/a	B	Front truss
140-149	Moon 250 (Scan)	n/a	B	Front truss
150-159	Moon 250 (Scan)	n/a	B	Front truss
200-215	Elation 250 (Moving Head)	n/a	B	Rear truss (stage)
216-231	Elation 250 (Moving Head)	n/a	B	Rear truss (stage)
232-247	Elation 250 (Moving Head)	n/a	B	Rear truss (stage)
248-263	Elation 250 (Moving Head)	n/a	B	Rear truss (stage)
264-279	Elation 250 (Moving Head)	n/a	B	Middle truss (stage)
280-295	Elation 250 (Moving Head)	n/a	B	Middle truss (stage)
296-305	Elation 250 (Moving Head)	n/a	B	Middle truss (stage)
306-321	Elation 250 (Moving Head)	n/a	B	Middle truss (stage)

DMX lines inputs are located at DJ's stack. Line A - blue cable, line B - green cable.

Elation 250 DMX addresses list	
1	Pan movement 8bit
2	Pan fine 16bit
3	Tilt movement 8bit
4	Tilt fine 16bit
5	Color wheel
6	Rotating gobos
7	Rotating gobos index/speed
8	Fixed gobos
9	3 facet rotating prism, Prism/gobo macros
10	Focus
11	Shutter/Strobe control
12	Dimmer
13	Iris
14	Frost filter
15	Speed Pan/Tilt Movement
15	Lamp control and reset

Moon 250 DMX addresses list	
1	Color
2	Gobo
3	Shutter/Strobe
4	Gobo rotation
5	Pan
6	Tilt

Detailed DMX channels description in Appendixes A and B

## **KLUB STUDIO**

### **Light and effects controllers**

1. SGM Pilot 2000 for DMX line A (intelligent effects).  
Pilot 2000 is a universal DMX controller able to control up to 40 'intelligent' units with a maximum of 36 channels each, for a total of 512 DMX channels.
2. Alfa-24 for DMX line B (dimmers)  
Alfa-24 is used for dimmers lights consists of 2 banks of Preset Faders, which can be used for up to controlling:
  - 24 individual Channels in Single Preset mode
  - 12 individual Channels in Two Preset mode
  - 12 individual Channels and 12 scenes in Wide mode
3. Two (non-DMX) fog machines Antari Z-1000 with remote controllers supporting two modes:
  - manual start
  - timer start with various interval and duration values
4. DMX splitter – 1 Input / 2 Outputs

## **KLUB STUDIO**

### **Sound system**

3-way sound system with DBX Driverack PA processor

Speakers:

- Mid/Hi – 4 x JBL SRX 722 (1200W each), flied
- Low – 4 x JBL SRX 728S (1600W each), under the stage

Amplifiers:

- Hi – Crown MicroTech 600
- Mid – 4 x Crown MacroTech 1200
- Low – 2 x Crown MacroTech 3600

Besides we can realize all sound demands in co-operation with Prosound ([www.prosound.pl](http://www.prosound.pl))

## **KLUB STUDIO**

### **Power**

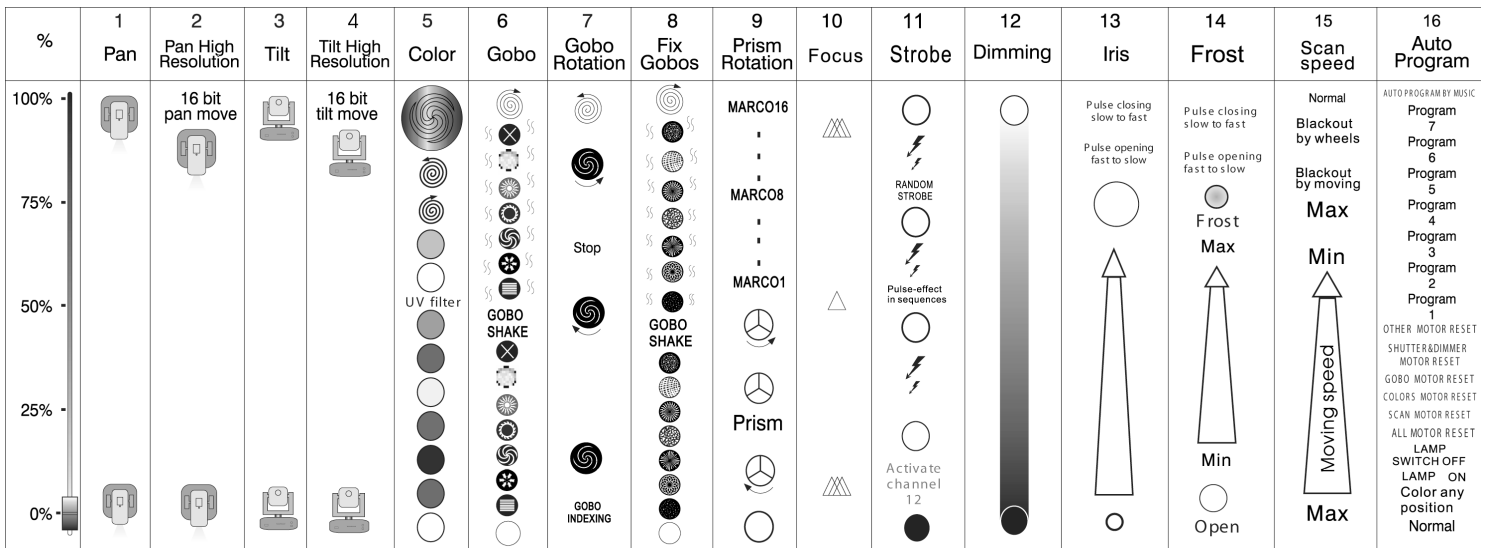
3-phase 230 V up to 80 A (peak 100 A).

Sockets:

- 63 A 5-pin (40 A fuse)
- 32 A 5-pin (32 A fuse)
- 63 A 4-pin (40 A fuse)
- 32 A 4-pin (32 A fuse)
- clips (63 A fuse)

# APPENDIX A

## Elation Design Spot Pro 250 DMX channel function and values



CHANNEL	DMX VALUE	DESCRIPTION
<b>1 - Pan</b>	0-255	Pan movement 8bit
<b>2 - Pan fine</b>	0-255	Pan fine 16bit
<b>3 - Tilt</b>	0-255	Tilt movement 8bit
<b>4 - Tilt fine</b>	0-255	Tilt fine 16bit
<b>5 - Color Wheel</b>	0-13	Open / White
	14-27	Red
	28-41	Blue
	42-55	Green
	56-69	Yellow
	70-83	Magenta
	84-97	Orange
	98-111	UV filter
	112-127	Pink
	128-187	Forwards rainbow effect from fast to slow
	188-193	No rotation
194-255	Backwards rainbow effect from slow to fast	
<b>6 - Rotating gobos continuous rotation</b>	0-9	Open
	10-19	Rot. Gobo 1
	20-29	Rot. Gobo 2
	30-39	Rot. Gobo 3
	40-49	Rot. Gobo 4
	50-59	Rot. Gobo 5
	60-69	Rot. Gobo 6
	70-79	Rot. Gobo 7
	80-99	Gobo 1 shake slow to fast
	100-119	Gobo 2 shake slow to fast
	120-139	Gobo 3 shake slow to fast
	140-159	Gobo 4 shake slow to fast
	160-179	Gobo 5 shake slow to fast
	180-199	Gobo 6 shake slow to fast
200-219	Gobo 7 shake slow to fast	
220-255	Rot. Gobo Wheel CW Rotation slow to fast	
<b>7 - Gobo Index Rotating Gobo Rotation</b>	0-127	Gobo Indexing
	128-187	CW Gobo Rotation from fast to slow
	188-193	No rotation
	194-255	CCW Gobo Rotation from slow to fast

<b>8 - Fixed Gobos</b>	0-13	Open
	14-27	Gobo 1
	28-41	Gobo 2
	42-55	Gobo 3
	56-69	Gobo 4
	70-83	Gobo 5
	84-97	Gobo 6
	98-111	Gobo 7
	112-127	Gobo 1 shake slow to fast
	128-143	Gobo 2 shake slow to fast
	144-159	Gobo 3 shake slow to fast
	160-175	Gobo 4 shake slow to fast
	176-191	Gobo 5 shake slow to fast
	192-207	Gobo 6 shake slow to fast
	208-223	Gobo 7 shake slow to fast
	224-255	Gobo Wheel rotation from slow to fast
<b>9 - 3 facet rotating prism Prism / Gobo macros</b>	0-3	Open
	4-63	CW prism rotation from fast to slow
	64-67	No rotation
	68-127	CCW prism rotation from slow to fast
	128-135	Macro 1
	136-143	Macro 2
	144-151	Macro 3
	152-159	Macro 4
	160-167	Macro 5
	168-175	Macro 6
	176-183	Macro 7
	184-191	Macro 8
	192-199	Macro 9
	200-207	Macro 10
	208-215	Macro 11
	216-223	Macro 12
224-231	Macro 13	
232-239	Macro 14	
240-247	Macro 15	
248-255	Macro 16	
<b>10 - Focus</b>	0-255	Continuous adjustment from far to near
<b>11 - Shutter, Strobe Control</b>	0-31	Shutter closed
	32-63	No function (shutter open)
	64-95	Strobe effect slow to fast
	96-127	No function (shutter open)
	128-159	Pulse-effect in sequences
	160-191	No function (shutter open)
	192-223	Random strobe effect from slow to fast
	224-255	Shutter Open – Dimmer Control
<b>12 - Dimmer (Intensity)</b>	0-14	Shutter Closed
	15-255	Intensity from 0% to 100%
<b>13 - Iris</b>	0-191	Iris Control from maximum to minimum diameter
	192-223	Iris Closing Pulse Effect from fast to slow
	224-255	Iris Opening Pulse Effect from slow to fast
<b>14 - Frost Filter</b>	0-191	Frost Filter 0% ~ 100%
	192-223	Frost Filter Opening Pulse Effect from fast to slow
	224-255	Frost Filter Closing Pulse Effect from slow to fast
<b>15 - Speed Pan/Tilt Movement</b>	0-4	Max speed
	5-225	Max to min speed
	226-235	Blackout by movement
	236-245	Blackout by all wheel changing
	246-255	No function

<b>16 - Lamp on/off, Reset Internal Programs</b>	0-19	Color Change Normal (Solid Colors Only)
	20-39	Enable Split Colors
	40-59	Lamp on
	60-79	Lamp switch off
	80-84	All motor reset
	85-87	Scan motor reset
	88-90	Colors motor reset
	91-93	Gobo motor reset
	94-96	Shutter & Dimmer motor reset
	97-99	Other motor reset
	100-119	Internal program 1
	120-139	Internal program 2
	140-159	Internal program 3
	160-179	Internal program 4
	180-199	Internal program 5
	200-219	Internal program 6
220-239	Internal program 7	
240-255	Auto program by music	

## APPENDIX B

### PR-Lighting Moon 250 DMX channel function and values

<b>10 - Focus</b>	0-255	Continuous adjustment from far to near
<b>1 - Color Wheel</b>	0-17	White
	18-35	Red
	36-53	Yellow
	54-71	Orange
	72-89	Blue
	90-107	Green
	108-125	Cyan
	126-143	UV
	144-161	Oink
	162-177	Light Green
178-255	Change of colours from slow to fast	
<b>2 - Gobo</b>	0-31	Open
	32-63	Gobo 1
	64-95	Gobo 2
	96-127	Gobo 3
	128-159	Gobo 4
	160-191	Gobo 5
	192-223	Gobo 6
	224-255	Gobo 7
<b>3 - Shutter/Strobe</b>	0-14	Blackout
	15-29	Open
	30-250	Strobe from slow to fast
	251-255	Open
	<b>4 - Gobo rotation</b>	0-4
5-120		Rotate CCW from slow to fast
121-139		Stop
140-255		Rotate CW from slow to fast
<b>5 - Pan</b>	0-255	Pan movement
<b>6 - Tilt</b>	0-255	Tilt Movement